



# American FactFinder Deep Linking Guide

Version 2.4  
April 12, 2012

## Table of Contents

- Overview ..... 2
- Create a Deep Link Using a Bookmark..... 3
- Linking to a Table ..... 8
- Linking to a Search Result ..... 10
- Linking to a Reference Map ..... 12
- Linking to the Geography Overlay List Tab ..... 14
- Linking to the Geography Overlay Name Tab..... 14
- Linking to the Geography Overlay Address Tab..... 14
- Linking to the Geography Overlay Map Tab ..... 14
- Linking to a Quick Start Search Result ..... 15
- Geographic Identifiers ..... 17
- Parameter Values..... 18

## Overview

American FactFinder provides website developers the ability to create URLs that Deep Link to the following:

- FactFinder Tables
- A set of FactFinder Search Results
- A FactFinder reference map centered on a specific geographic entity
- The FactFinder Geography Overlay (Name, Address, or Map tabs)
- The FactFinder Quick Start search results (Topic or Table Name, Population Group, or Industry search, with or without a Geography)

The easiest way to create a deep link is to use the bookmark function from a table or map result in American FactFinder.

Representative values for the parameters needed to build deep links are described in this document.

**NOTE:** All parameter values must be URL encoded. The browser automatically does this upon a form submission. However, when adding a link manually to a web page, you must encode the special characters (delimiters) yourself, as in the table below.

For readability, example URLs shown in this document show unencoded characters (e.g., “:” rather than “%3A”).

Special Character	Description	URL Encoded Value
#	hash	%23
\$	dollar sign	%24
%	percent sign	%25
+	plus sign	%2B
-	minus sign	%2D
.	period	%2E
/	slash	%2F
:	colon	%3A
;	semi-colon	%3B
	pipe	%7C

## Create a Deep Link Using a Bookmark

The easiest way to create a deep link to a table in American FactFinder is to create a bookmark to the table, then copy that URL for use as a deep link. The following example creates a deep link to the ACS Subject Table S1901 (Income in the Past 12 Months) from the 2010 ACS 1-Year Estimates. This example uses **Mozilla Firefox 11**.

- 1) From the American FactFinder Main Page, enter “2010 S1901” and “Cincinnati, Ohio” into the Quick Start text boxes. Click ‘GO’.

Your Selections  
"Your Selections" is empty

Search using the options below:

Topics  
(age, income, year, dataset, ...)

Geographies  
(states, counties, places, ...)

Race and Ethnic Groups  
(race, ancestry, tribe)

Industry Codes  
(NAICS industry, ...)

Your source for population, housing, economic, and geographic information

Quick Start

Enter search term(s) and click 'GO' ?

topic or table name state, county or place (optional)

2010 S1901 for Cincinnati, Ohio

topics  race/ancestry  industries

GO

Or use the options on the left to begin your search

News and Notes

2) Click the search result for "S1901 - Income in the past 12 months..." from the 2010 ACS 1-year estimates.

Search Results: 1-3 of 3 per page: 25

Selected: View | Download | Compare | Clear All 1

ID	Title	Dataset	About
<input type="checkbox"/> S1901	INCOME IN THE PAST 12 MONTHS (IN 2010 INFLATION-ADJUSTED DOLLARS)	2010 ACS 1-year estimates	
<input type="checkbox"/> S1901	INCOME IN THE PAST 12 MONTHS (IN 2010 INFLATION-ADJUSTED DOLLARS)	2010 ACS 3-year estimates	
<input type="checkbox"/> S1901	INCOME IN THE PAST 12 MONTHS (IN 2010 INFLATION-ADJUSTED DOLLARS)	2010 ACS 5-year estimates	

Selected: View | Download | Compare | Clear All 1

3) Click the bookmark button on the table result.

S1901 | INCOME IN THE PAST 12 MONTHS (IN 2010 INFLATION-ADJUSTED DOLLARS)

2010 American Community Survey 1-Year Estimates

Table View | **Map View**

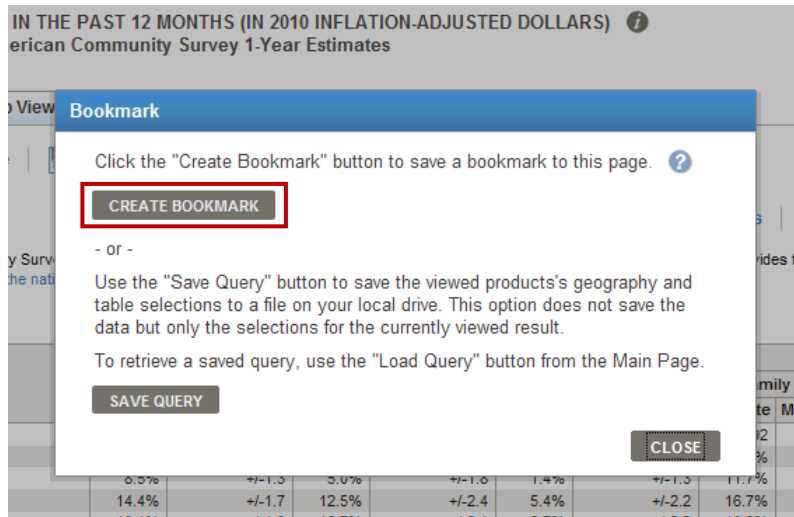
Actions: Modify Table | **Bookmark** | Print | Download | Create a Map

[View Geography Notes](#) | [View Table Notes](#)

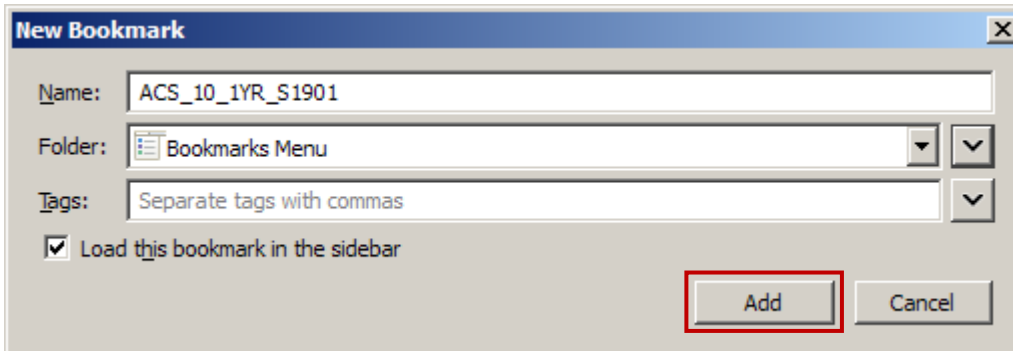
Although the American Community Survey (ACS) produces population, demographic and housing unit estimates, for 2010, the 2010 Census provides the official counts of the population and housing units for the nation, states, counties, cities and towns.

Subject	Cincinnati city, Ohio							
	Households		Families		Married-couple families		Nonfamily households	
	Estimate	Margin of Error	Estimate	Margin of Error	Estimate	Margin of Error	Estimate	Margin of Error
Total	126,145	+/-4,336	62,053	+/-2,894	31,512	+/-2,294	64,092	+/-4,275
Less than \$10,000	17.9%	+/-1.8	14.8%	+/-2.3	3.5%	+/-1.6	22.2%	+/-2.6
\$10,000 to \$14,999	8.5%	+/-1.3	5.0%	+/-1.8	1.4%	+/-1.3	11.7%	+/-1.8
\$15,000 to \$24,999	14.4%	+/-1.7	12.5%	+/-2.4	5.4%	+/-2.2	16.7%	+/-2.4

4) Click the 'Create Bookmark' button.

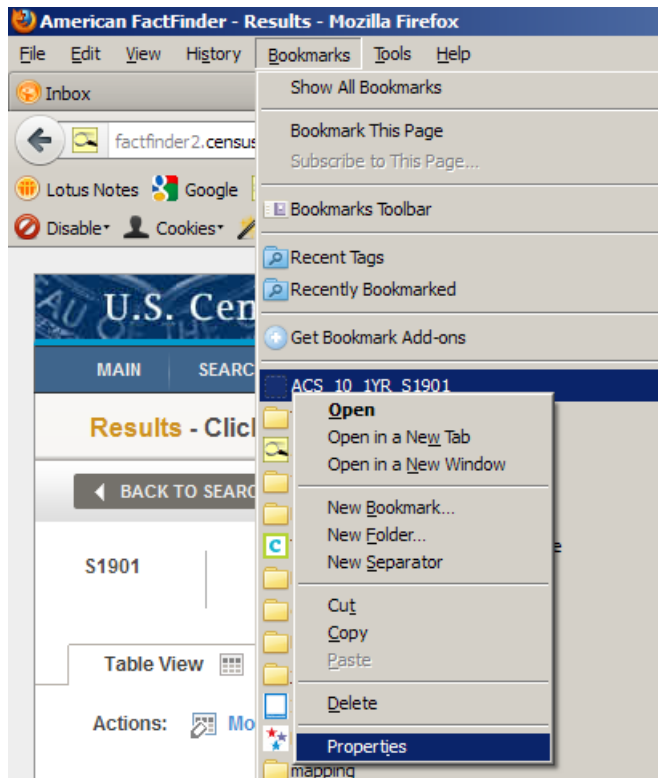


5) Click 'Add' to save this bookmark in your browser.

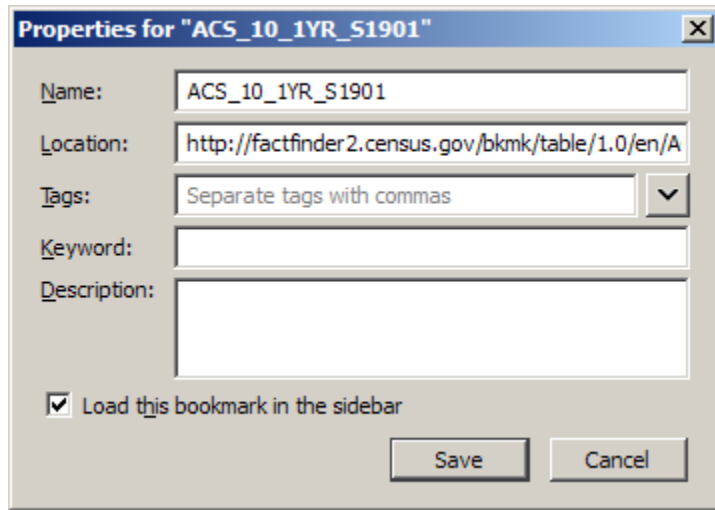


Note that the options you see may vary depending on the browser you are using.

6) Click 'Bookmarks' on the browser's menu bar, and then right-click the bookmark you just created. Select 'Properties' from the menu.



7) Select the URL from the Location field.



Properties for "ACS\_10\_1YR\_S1901" [X]

Name: ACS\_10\_1YR\_S1901

Location: <http://factfinder2.census.gov/bkmk/table/1.0/en/A>

Tags: Separate tags with commas [v]

Keyword:

Description:

Load this bookmark in the sidebar

Save Cancel

The deep link for this table from the location field is:

**[http://factfinder2.census.gov/bkmk/table/1.0/en/ACS/10\\_1YR/S1901/1600000US3915000](http://factfinder2.census.gov/bkmk/table/1.0/en/ACS/10_1YR/S1901/1600000US3915000)**

For more information about how this URL is constructed, see "Linking to a Table" in the next section of this Deep Linking Guide.

## Linking to a Table

The format for a deep link to a statistical table is:

```
factfinder2.census.gov/bkmk/table/version/lang/program/dataset/product  
[/geo_id[|geo_id]*]  
[/codetype~code[|code]*]*
```

Where:

*version*

Bookmark API Version, current **1.0** (required).

*lang*

Language used to display the page, either **en** or **es** (required).

*program*

Program associated with the product (required).

*dataset*

Dataset containing the product (required).

*product*

Product identifier (required).

*geo\_id*[|*geo\_id*]\*

One or more Geographic Identifiers (optional). If not specified, product-specific default Geographic Identifier(s) are used.

*codetype~code*[|*code*]\*

A Code Type (Population Group or Industry) and one or more Codes (optional). If not specified, product-specific default Code(s) are used.



## Examples

- Display table B07010 from the 2006-2008 American Community Survey 3-Year Estimates for the U.S, Alabama, and Autauga County, Alabama:

[http://factfinder2.census.gov/bkmk/table/1.0/en/ACS/08\\_3YR/B07010/0100000US|0400000US01|0500000US01001](http://factfinder2.census.gov/bkmk/table/1.0/en/ACS/08_3YR/B07010/0100000US|0400000US01|0500000US01001)

- Display table DP-2 from the 2008 American Community Survey 1-Year Estimates for the U.S and Alabama:

[http://factfinder2.census.gov/bkmk/table/1.0/en/ACS/08\\_1YR/DP2/0100000US|0400000US01](http://factfinder2.census.gov/bkmk/table/1.0/en/ACS/08_1YR/DP2/0100000US|0400000US01)

- Display table GCT-T01 from the 2008 Population Estimates for Alabama by County:

<http://factfinder2.census.gov/bkmk/table/1.0/en/PEP/2008/GCTT01.ST05/0400000US01>

- Display the 2002 Economy-Wide Key Statistics table for California and Colorado for NAICS codes 23 and 236:

[http://factfinder2.census.gov/bkmk/table/1.0/en/ECN/2002\\_US/00A1/0400000US06|0400000US08/naics~23|236](http://factfinder2.census.gov/bkmk/table/1.0/en/ECN/2002_US/00A1/0400000US06|0400000US08/naics~23|236)

- Display table PCT005 from Census 2000 Summary File 2 (SF 2) for Florida and Georgia for Population Group Indonesian Alone (021):

[http://factfinder2.census.gov/bkmk/table/1.0/en/DEC/00\\_SF2/PCT005/0400000US12|0400000US13/popgroup~021](http://factfinder2.census.gov/bkmk/table/1.0/en/DEC/00_SF2/PCT005/0400000US12|0400000US13/popgroup~021)

## Linking to a Search Result

The format for a deep link to a search result is:

```
factfinder2.census.gov/bkmk/navigation/version/lang  
[/text_search:Text_Search_String]  
[/dimension:dimension_value[/dimension:dimension_value]*]
```

Where:

*version*

Bookmark API Version, current **1.0** (required).

*lang*

Language used to display the page, either **en** or **es** (required).

*text\_search:Text Search String*

A Text Search Key and Text Search Value pair (optional). Only one text search is allowed.

*dimension:dimension\_value*[/*dimension:dimension\_value*]\*

One or more Dimension and Dimension Value pairs (optional).

## Examples

- Display search results for a text search for "B07010":

[http://factfinder2.census.gov/bkml/navigation/1.0/en/text\\_search:B07010](http://factfinder2.census.gov/bkml/navigation/1.0/en/text_search:B07010)

- Display search results for the program ACS:

[http://factfinder2.census.gov/bkml/navigation/1.0/en/d\\_program:ACS](http://factfinder2.census.gov/bkml/navigation/1.0/en/d_program:ACS)

- Display search results for the program ACS and the text search "veteran":

[http://factfinder2.census.gov/bkml/navigation/1.0/en/text\\_search:veteran/d\\_program:ACS](http://factfinder2.census.gov/bkml/navigation/1.0/en/text_search:veteran/d_program:ACS)

- Display search results for the American Community Survey program with the "DATA\_PROFILE" product type:

[http://factfinder2.census.gov/bkml/navigation/1.0/en/d\\_program:ACS/d\\_product\\_type:DATA\\_PROFILE](http://factfinder2.census.gov/bkml/navigation/1.0/en/d_program:ACS/d_product_type:DATA_PROFILE)

- Display search results for showing only detailed tables:

[http://factfinder2.census.gov/bkml/navigation/1.0/en/d\\_product\\_type:DETAILED\\_TABLE](http://factfinder2.census.gov/bkml/navigation/1.0/en/d_product_type:DETAILED_TABLE)

## Linking to a Reference Map

The format for a deep link to a reference map is:

```
factfinder2.census.gov/bkmk/sm/version/lang
?mapyear=year
&extenttype=geo
&gslcode=gsl_code
&geoids=geo_id
[&by=gsl_code[:gsl_code]*]
[&bl=gsl_code[:gsl_code]*]
[&fy=feature_code[:feature_code]*]
[&fl=feature_code[:feature_code]*]
```

Where:

*version*

Bookmark API Version, current **1.0** (required).

*lang*

Language used to display the page, either **en** or **es** (required).

*mapyear=year*

Map year (vintage) to display (required). Valid values include 2000, 2002, 2004-2010

*extenttype=geo*

The Extent Type must be "geo" (required).

*gslcode=gsl\_code*

The Geographic Summary Level Code (required). This must match the specified Geographic Identifier.

*geoids=geo\_id*

The Geographic Identifier of the geographic area to display on the map (required).

*by=gsl\_code[:gsl\_code]\**

One or more Geographic Summary Levels for the Boundaries to display on the map (optional).

*bl=gsl\_code[:gsl\_code]\**

One or more Geographic Summary Levels for the Boundary Labels to display on the map (optional).

*ft=feature\_code[:feature\_code]\**

One or more Feature Codes for the Features to display on the map (optional).

`bl=feature_code[:feature_code]*`

One or more Feature Codes for the Feature Labels to display on the map (optional).

## Examples

- Display a reference map centered on Clark County, Ohio:

`http://factfinder2.census.gov/bkmk/sm/1.0/en?mapyear=2008&extenttype=geo&gslcode=050&geoids=0500000US39023`

- Display a reference map centered on Springfield City School District with the Unified School District boundaries and labels turned on:

`http://factfinder2.census.gov/bkmk/sm/1.0/en?mapyear=2008&extenttype=geo&gslcode=970&geoids=9700000US3904481&by=970&bl=970`

## Linking to the Geography Overlay List Tab

<http://factfinder2.census.gov/bkmk/select/1.0/en/geo-by-list>

## Linking to the Geography Overlay Name Tab

<http://factfinder2.census.gov/bkmk/select/1.0/en/geo-by-name>

## Linking to the Geography Overlay Address Tab

<http://factfinder2.census.gov/bkmk/select/1.0/en/geo-by-address>

## Linking to the Geography Overlay Map Tab

<http://factfinder2.census.gov/bkmk/select/1.0/en/geo-by-map>

## Linking to a Quick Start Search Result

The format for a deep link to a Quick Start search result is:

```
factfinder2.census.gov/bkmk/qs/version/lang  
/<text_search|popgroup_search|ib_search>:search_string  
[/geo_search:geo_search_string
```

Where:

*version*

Bookmark API Version, current **1.0** (required).

*lang*

Language used to display the page, either **en** or **es** (required).

*text\_search:text search string*

A text search string

*popgroup\_search:text search string*

A population group search string

*ib\_search:text search string*

An industry code or industry name search string

*geo\_search:geo search string*

An optional geography search string

## Examples

- Deep Link to Quick Start search results for population in Ohio:

[http://factfinder2.census.gov/bkmk/qs/1.0/en/text\\_search:population/geo\\_search:ohio](http://factfinder2.census.gov/bkmk/qs/1.0/en/text_search:population/geo_search:ohio)

- Deep Link to Quick Start search results for the population group of Asian in Ohio:


[http://factfinder2.census.gov/bkmk/qs/1.0/en/popgroup\\_search:asian/geo\\_search:ohio](http://factfinder2.census.gov/bkmk/qs/1.0/en/popgroup_search:asian/geo_search:ohio)

- Deep Link to Quick Start search results for the mining industry in Ohio:

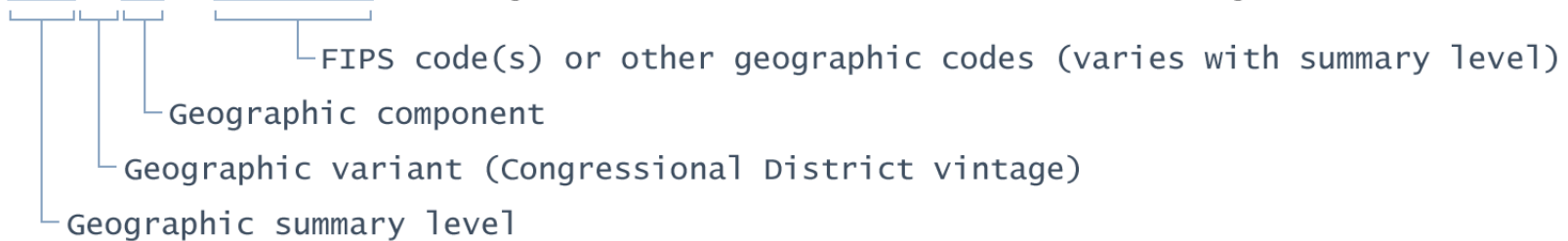
[http://factfinder2.census.gov/bkmk/qs/1.0/en/ib\\_search:mining/geo\\_search:ohio](http://factfinder2.census.gov/bkmk/qs/1.0/en/ib_search:mining/geo_search:ohio)



## Geographic Identifiers

Use the About icons (  ) on the Geography Overlay in American FactFinder to find Geographic Identifiers. Geographic Identifiers used in FactFinder are constructed as follows:

0100000US	- United States
0100001US	- United States - Urban
0400000US39	- Ohio
0500000US39023	- Clark County, Ohio
1600000US3974118	- Springfield City, Ohio
5000600US0602	- Congressional District 2 (106th Congress), California



## Parameter Values

Version	
1.0	Bookmark API Version 1.0

Language	
en	English
es	Spanish (only available for Puerto Rico ACS and Decennial data)

Program	Program Name
ACS	American Community Survey
ASM	Annual Survey of Manufactures
BES	Business Expenses Survey
BP	Business Patterns
CFS	Commodity Flow Survey
DEC	Decennial Census
DMM	Data Access and Dissemination System
ECN	Economic Census
GEO	Geography
NES	Nonemployer Statistics
PEP	Population Estimates
SBO	Survey of Business Owners

Program	Dataset	Dataset Name
ACS	10_1YR	2010 American Community Survey 1-Year Estimates
ACS	09_1YR	2009 American Community Survey 1-Year Estimates
ACS	08_3YR	2006-2008 American Community Survey 3-Year Estimates
ACS	08_1YR	2008 American Community Survey 1-Year Estimates

Program	Dataset	Dataset Name
ACS	07_3YR	2005-2007 American Community Survey 3-Year Estimates
ACS	07_1YR	2007 American Community Survey 1-Year Estimates
ACS	06_EST	2006 American Community Survey
ACS	05_EST	2005 American Community Survey
ASM	2008	2008 Annual Survey of Manufactures
ASM	2006	2006 Annual Survey of Manufactures
ASM	2005	2005 Annual Survey of Manufactures
ASM	2004	2004 Annual Survey of Manufactures
BES	2002	2002 Business Expenses Survey
BP	2009	2009 Business Patterns
BP	2008	2008 Business Patterns
BP	2007	2007 Business Patterns
BP	2006	2006 Business Patterns
BP	2005	2005 Business Patterns
BP	2004	2004 Business Patterns
CFS	2007	2007 Commodity Flow Survey
CFS	2002	2002 Commodity Flow Survey
DEC	10_SF1	2010 Census Summary File 1
DEC	10_PL	2010 Census Redistricting Data (Public Law 94-171) Summary File
DEC	10_NSRD	2010 Census National Summary File of Redistricting Data
DEC	10_DP	2010 Demographic Profile Data
DEC	10_SS	2010 Census Same-Sex Couple Households Summary File
DEC	00_110H	110th Congressional District Summary File (100-Percent)
DEC	00_110S	110th Congressional District Summary File (Sample)
DEC	00_AIAN	Census 2000 American Indian and Alaska Native Summary File (AIANSF) - Sample Data
DEC	00_IAGU	Guam Summary File
DEC	00_SF2	Census 2000 Summary File 2 (SF 2) 100-Percent Data
DEC	00_CQR	Census 2000 Count Question Resolution (CQR)
DEC	00_PL	Census 2000 Redistricting Data (Public Law 94-171) Summary File
DEC	00_IAMP	Commonwealth of the Northern Mariana Islands Summary File

Program	Dataset	Dataset Name
DEC	00_SF3	Census 2000 Summary File 3 (SF 3) - Sample Data
DEC	00_SLDH	Census 2000 State Legislative District Summary File (100-Percent)
DEC	00_IAAS	American Samoa Summary File
DEC	00_SF1	Census 2000 Summary File 1 (SF 1) 100-Percent Data
DEC	00_IAVI	U.S. Virgin Islands Summary File
DEC	00_SF4	Census 2000 Summary File 4 (SF 4) - Sample Data
DEC	00_SLDS	Census 2000 State Legislative District Summary File (Sample)
ECN	2007_US	2007 Economic Census
ECN	2007_IA	2007 Economic Census of Island Areas
ECN	2002_US	2002 Economic Census
ECN	2002_IA	2002 Economic Census of Island Areas
NES	2008	2008 Nonemployer Statistics
NES	2007	2007 Nonemployer Statistics
NES	2006	2006 Nonemployer Statistics
NES	2005	2005 Nonemployer Statistics
NES	2004	2004 Nonemployer Statistics
NES	2002	2002 Nonemployer Statistics
PEP	2009	2009 Population Estimates
PEP	2008	2008 Population Estimates
PEP	2007	2007 Population Estimates
PEP	2006	2006 Population Estimates
SBO	2002	2002 Survey of Business Owners

Geographic Summary Level Code	Summary Level
010	Nation
020	Region
030	Division
040	State
050	County

060	County Subdivision
067	Subbarrio
140	Census Tract
940	Traffic Analysis Zone
160	Place
170	Consolidated City
280	American Indian Area/Alaska Native Area/Hawaiian Home Land (or part)
281	Tribal Subdivision/Remainder (or part)
230	Alaska Native Regional Corporation
500	Congressional District – 106th
950**	School District, Elementary
960**	School District, Secondary
970**	School District, Unified
390	Metropolitan Statistical Area/Consolidated Metropolitan Statistical Area (or part)
395	Primary Metropolitan Statistical Area (or part)
374	New England County Metropolitan Area (or part)
851	3-Digit ZIP Code Tabulation Area (or part)
871	5-Digit ZIP Code Tabulation Area (or part)
250	American Indian Area/Alaska Native Area/Hawaiian Home Land
256	Tribal Census Tract
251	Tribal Subdivision/Remainder
380	Metropolitan Statistical Area/Consolidated Metropolitan Statistical Area
385	Primary Metropolitan Statistical Area
370	New England County Metropolitan Area
400	Urban Area
850	3-Digit ZIP Code Tabulation Area
860	5-Digit ZIP Code Tabulation Area

Feature Code	Feature
RDJEEP	Jeep Trail
RDALLEY	Alley, Walkway
RAILMAIN	Railroad
PIPE	Pipeline; Powerline
LMMIL	Military Installation
LMHOSP	Hospital

LMJAIL	Jail
LMSCHOOL	School
LMCHURCH	Church
LMAIR	Airport
LMTWR	Lookout Tower
LMGOL	Golf Course
LMCEM	Cemetery

**Note:** The dimension:dimension value pairs are case-sensitive.

Topic Hierarchy	dimension:dimension_value pair
<b>People</b>	
Basic Count/Estimate:	
Civilian Population	d_people_basic_count:CIVILIAN_POP
Group Quarters Population	d_people_basic_count:GROUP_QUARTERS_POP
Household & Family	d_people_basic_count:HOUSEHOLD_FAMILY
Overseas Population	d_people_basic_count:OVERSEAS_POP
Population in Housing Units	d_people_basic_count:POP_IN_HOUSING_UNITS
Population Total	d_people_basic_count:POP_TOTAL
Resident Population	d_people_basic_count:RESIDENT_POP
Urban/Rural	d_people_basic_count:URBAN_RURAL
Age & Sex:	
Age	d_people_age_and_sex:AGE
Age of Householder	d_people_age_and_sex:AGE_HOUSEHOLDER
Sex	d_people_age_and_sex:SEX
Age Group:	
Children	d_people_age_group:CHILDREN
Older Population	d_people_age_group:OLDER_POP
Teenager	d_people_age_group:TEENAGER
Disability:	
Disability	d_people_disability:DISABILITY
Mobility	d_people_disability:MOBILITY
Self-Care Limitations	d_people_disability:SELF_CARE_LIMITATION
Work Disability Status	d_people_disability:WORK_DISABILITY_STATUS
Education:	

<b>Topic Hierarchy</b>	<b>dimension:dimension_value pair</b>
Educational Attainment	d_people_education:EDUCATIONAL_ATTAINMENT
Field of Degree	d_people_education:FIELD_OF_DEGREE
School Enrollment	d_people_education:SCHOOL_ENROLLMENT
School Meal	d_people_education:SCHOOL_MEAL
School Type	d_people_education:SCHOOL_TYPE
Vocational Training	d_people_education:VOCATIONAL_TRAINING
<b>Employment:</b>	
Benefits	d_people_employment:BENEFITS
Class of Worker	d_people_employment:CLASS_OF_WORKER
Commuting (Journey to Work)	d_people_employment:JOURNEY_TO_WORK
Employment (Labor Force) Status	d_people_employment:LABOR_FORCE_STATUS
Industry	d_people_employment:EMPLOYMENT_INDUSTRY
Occupation	d_people_employment:OCCUPATION
Part/Full-Time Work Status	d_people_employment:PT_FT_WORK_STATUS
Place of Work	d_people_employment:PLACE_OF_WORK
Subsistence Activity	d_people_employment:SUBSISTENCE_ACTIVITY
Work Disability Status	d_people_employment:WORK_DISABILITY_STATUS
<b>Income &amp; Earnings:</b>	
Income/Earnings (Households)	d_people_income:INCOME_HOUSEHOLD
Income/Earnings (Individuals)	d_people_income:INCOME_INDIVIDUAL
Remittances Sent Abroad	d_people_income:REMITTANCES_SENT_ABROAD
<b>Insurance Coverage:</b>	
Health Insurance	d_people_insurance_coverage:INSURANCE_HEALTH
<b>Language:</b>	
English Usage	d_people_language:ABILITY_TO_SPEAK_ENGLISH
Language Spoken at Home	d_people_language:LANGUAGE_SPOKEN_AT_HOME
<b>Marital &amp; Fertility Status:</b>	
Fertility	d_people_marital_status:FERTILITY
Marital History	d_people_marital_status:MARITAL_HISTORY
Marital Status	d_people_marital_status:MARITAL_STATUS
<b>Origins:</b>	
Ancestry	d_people_origin:ANCESTRY
Citizenship	d_people_origin:CITIZENSHIP
Foreign Born	d_people_origin:FOREIGN_BORN
Hispanic or Latino	d_people_origin:HISPANIC

<b>Topic Hierarchy</b>	<b>dimension:dimension_value pair</b>
Migration (International/Domestic)	d_people_origin:MIGRATION_INTL_DOMESTIC
Migration (Previous Residence)	d_people_origin:MIGRATION_PRE_RESIDENCE
Native Born	d_people_origin:NATIVE_BORN
Place of Birth	d_people_origin:PLACE_OF_BIRTH
Race or Ethnic Origin	d_people_origin:RACE
Year of Entry	d_people_origin:YEAR_OF_ENTRY
Population Change:	
Births	d_people_population_change:BIRTHS
Deaths	d_people_population_change:DEATHS
Migration (International/Domestic)	d_people_population_change:MIGRATION_INTL_DOMESTIC
Migration (Previous Residence)	d_people_population_change:MIGRATION_PRE_RESIDENCE
Reason for Migration	d_people_population_change:MIGRATION_REASON
Poverty:	
Food Stamps/SNAP	d_people_poverty:FOOD_STAMPS
Heating and Cooling Assistance	d_people_poverty:HEATING_COOLING_ASSISTANCE
Poverty	d_people_poverty:POVERTY
Race & Ethnicity:	
Alaska Native	d_people_race_and_ethnicity:ALASKA_NATIVE
American Indian	d_people_race_and_ethnicity:AMERICAN_INDIAN
Ancestry	d_people_race_and_ethnicity:ANCESTRY
Asian	d_people_race_and_ethnicity:ASIAN
Black or African American	d_people_race_and_ethnicity:BLACK
Hispanic or Latino	d_people_race_and_ethnicity:HISPANIC
Native Hawaiian and Pacific Islander	d_people_race_and_ethnicity:NHPI
Race/Ethnicity of Householder	d_people_race_and_ethnicity:RACE_HOUSEHOLDER
Race/Ethnicity of Individual	d_people_race_and_ethnicity:RACE_INDIVIDUAL
Some Other Race	d_people_race_and_ethnicity:SOME_OTHER_RACE
Two or More Races	d_people_race_and_ethnicity:TWO_OR_MORE_RACES
White	d_people_race_and_ethnicity:WHITE
White, Not Hispanic or Latino	d_people_race_and_ethnicity:WHITE_NOT_HISPANIC
Relationship:	
Caregiver	d_people_relationship:CAREGIVERS
Family	d_people_relationship:FAMILIES
Family Type	d_people_relationship:FAMILY_TYPE
Fertility	d_people_relationship:FERTILITY



<b>Topic Hierarchy</b>	<b>dimension:dimension_value pair</b>
Grandparent	d_people_relationship:GRANDPARENT
Household Relationship	d_people_relationship:HOUSEHOLD_RELATIONSHIP
Household Size	d_people_relationship:HOUSEHOLD_SIZE
Household Type	d_people_relationship:HOUSEHOLD_TYPE
Marital Status	d_people_relationship:MARITAL_STATUS
Own Children	d_people_relationship:OWN_CHILDREN
Unmarried Partner	d_people_relationship:UNMARRIED_PARTNERS
<b>Veterans:</b>	
Military Dependents	d_people_veterans:MILITARY_DEPENDENTS
Service Connected Disability	d_people_veterans:SERVICE_DISABILITY
Veteran Status	d_people_veterans:VETERAN_STATUS
<b>Housing</b>	
<b>Basic Count/Estimate:</b>	
Housing Units	d_housing_basic_count:HOUSING_UNITS
Living Quarters	d_housing_basic_count:LIVING_QUARTERS
<b>Financial Characteristic:</b>	
Additional Mortgages	d_housing_financial:ADDITIONAL_MORTGAGES
Contract/Asked Rent	d_housing_financial:CONTRACT_ASKED_RENT
Gross Rent	d_housing_financial:GROSS_RENT
Meals included in Rent	d_housing_financial:MEALS_INCLUDED_IN_RENT
Mobile Home Costs	d_housing_financial:MOBILE_HOME_COSTS
Mortgages and Status	d_housing_financial:MORTGAGES_AND_STATUS
Owner Costs	d_housing_financial:OWNER_COSTS
Real Estate Taxes	d_housing_financial:REAL_ESTATE_TAXES
Renter Housing Costs	d_housing_financial:RENTER_HOUSING_COSTS
Renter Statistics	d_housing_financial:RENTER_STATISTICS
Utilities	d_housing_financial:UTILITIES
Value of Home	d_housing_financial:VALUE_OF_HOME
<b>Occupancy Characteristic:</b>	
Age of Householder	d_housing_occupancy:AGE_HOUSEHOLDER
Farm Residence	d_housing_occupancy:FARM_RESIDENCE
Hispanic or Latino Householder	d_housing_occupancy:HISPANIC_HOUSEHOLDER
Household Size	d_housing_occupancy:HOUSEHOLD_SIZE
Household Type	d_housing_occupancy:HOUSEHOLD_TYPE
Number of Structures	d_housing_occupancy:NUMBER_OF_STRUCTURES

<b>Topic Hierarchy</b>	<b>dimension:dimension_value pair</b>
Occupancy and Vacancy Status	d_housing_occupancy:OCCUPANCY_VACANCY_STATUS
Occupants Per Room	d_housing_occupancy:OCCUPANTS_PER_ROOM
Owner/Renter (Tenure in Occupied Units)	d_housing_occupancy:TENURE_IN_OCCUPIED_UNITS
Race/Ethnicity of Householder	d_housing_occupancy:RACE_HOUSEHOLDER
Usual Home Elsewhere	d_housing_occupancy:USUAL_HOME_ELSEWHERE
Vehicles Available	d_housing_occupancy:VEHICLES_AVAILABLE
Year Householder Moved Into Unit	d_housing_occupancy:YEAR_MOVED_INTO_UNIT
<b>Physical Characteristic:</b>	
Air Conditioning	d_housing_physical:AIR_CONDITIONING
Battery Operated Radio	d_housing_physical:BATTERY_OPERATED_RADIO
Bedrooms	d_housing_physical:BEDROOMS
Building Materials	d_housing_physical:BUILDING_MATERIALS
Computer Availability	d_housing_physical:COMPUTER_AVAILABILITY
Condominium Status	d_housing_physical:CONDOMINIUM_STATUS
Cooking Fuel	d_housing_physical:COOKING_FUEL
Heating Fuel	d_housing_physical:HEATING_FUEL
Internet Access	d_housing_physical:INTERNET_ACCESS
Kitchen Facilities	d_housing_physical:KITCHEN_FACILITIES
Plumbing Facilities	d_housing_physical:PLUMBING_FACILITIES
Rooms	d_housing_physical:ROOMS
Sewage Disposal	d_housing_physical:SEWAGE_DISPOSAL
Source of Water	d_housing_physical:SOURCE_OF_WATER
Telephone Service Available	d_housing_physical:TELEPHONE_SVC_AVAILABLE
Units in Structure	d_housing_physical:UNITS_IN_STRUCTURE
Year Structure Built	d_housing_physical:YEAR_STRUCTURE_BUILT
<b>Business and Industry</b>	
<b>Assets &amp; Capital Expenditures:</b>	
Capital Expenditures	d_business_assets_and_capital_expend:CAPITAL_EXPENDITURES
Depreciation Charges	d_business_assets_and_capital_expend:DEPRECIATION_CHARGES
Expansion Financing	d_business_assets_and_capital_expend:EXPANSION_FINANCING
Gross Value of Depreciable Assets	d_business_assets_and_capital_expend:GV_OF_DEPRECIABLE_ASSETS
Rental Payments	d_business_assets_and_capital_expend:RENTAL_PAYMENTS
Retired Assets	d_business_assets_and_capital_expend:RETIRED_ASSETS
Start-up Capital	d_business_assets_and_capital_expend:START_UP_CAPITAL
<b>Business Characteristic:</b>	

<b>Topic Hierarchy</b>	<b>dimension:dimension_value pair</b>
Age of Business	d_business_business:AGE_OF_BUSINESS
Class of Customer	d_business_business:CLASS_OF_CUSTOMER
Employment Size of Establishment/Firm	d_business_business:EMPLOYMENT_SIZE_OF_FIRM
Family-Owned Business	d_business_business:FAMILY_OWNED_BUSINESS
Foreign Operations/Outsourcing	d_business_business:FO_OUTSOURCING
Franchise Status	d_business_business:FRANCHISE_STATUS
Home-Based Business	d_business_business:HOME_BASED_BUSINESS
Internet Presence	d_business_business:INTERNET_PRESENCE
Language Spoken	d_business_business:LANGUAGE_SPOKEN
Legal Form of Organization	d_business_business:LEGAL_FORM_OF_ORGANIZATION
Nonemployers	d_business_business:NONEMPLOYERS
Number of Sectors Operating In	d_business_business:NUMBER_SECTORS_OPERATING_IN
Part-Year/Seasonal Operations	d_business_business:PART_YEAR_OPERATIONS
Sales/Receipt Size of Establishment/Firm	d_business_business:SALES_SIZE_OF_FIRM
Tax-Exempt Status	d_business_business:TAX_EXEMPT_STATUS
<b>Business Owner:</b>	
Business Acquisition	d_business_business_owner:BUSINESS_ACQUISITION
Foreign-Born Owner	d_business_business_owner:FOREIGN_BORN_OWNER
Husband/Wife Owner	d_business_business_owner:HUSBAND_WIFE_OWNER
Owner's Age	d_business_business_owner:OWNER_AGE
Owner's Educational Attainment	d_business_business_owner:OWNER_EDUCATION
Owner's Primary Function	d_business_business_owner:OWNER_PRIMARY_FUNCTION
Owner's Race and Ethnicity	d_business_business_owner:OWNER_RACE_AND_ETHNICITY
Owner's Sex	d_business_business_owner:OWNER_SEX
Owner's Veteran Status	d_business_business_owner:OWNER_VETERAN_STATUS
Owner's Working Hours	d_business_business_owner:OWNER_WORKING_HOURS
Previous Self-Employment	d_business_business_owner:PREVIOUS_SELF_EMPLOYMENT
Primary Source of Income	d_business_business_owner:PRIMARY_SOURCE_OF_INCOME
<b>Economic Series:</b>	
Advance Report	d_business_economic_series:ADVANCE_REPORT
Bridge Between NAICS Vintages	d_business_economic_series:NAICS_BRIDGE
Comparative Statistics	d_business_economic_series:COMPARATIVE_STATISTICS
Economy-Wide Key Statistics	d_business_economic_series:EWKS
Enterprise Statistics	d_business_economic_series:ENTERPRISE_STATISTICS
Establishment/Firm Size	d_business_economic_series:ESTB_FIRM_SIZE

<b>Topic Hierarchy</b>	<b>dimension:dimension_value pair</b>
Franchise Statistics	d_business_economic_series:FRANCHISE_STATISTICS
Geographic Area	d_business_economic_series:GEOGRAPHIC_AREA
Hazardous Materials (HAZMAT)	d_business_economic_series:HAZMAT
Industry	d_business_economic_series:INDUSTRY
Miscellaneous Subject	d_business_economic_series:MISCELLANEOUS_SUBJECT
Product Line	d_business_economic_series:PRODUCT_LINE
Subjects/Summary	d_business_economic_series:SUBJECTS_SUMMARY
ZIP Code Report	d_business_economic_series:ZIP_CODES
<b>Employment:</b>	
Construction Workers	d_business_employment:CONSTRUCTION_WORKERS
Contractors	d_business_employment:CONTRACTORS
Employees	d_business_employment:EMPLOYEES
Full-Time/Part-Time Workers	d_business_employment:FT_PT_WORKERS
Leased/Nonleased Employees	d_business_employment:LEASED_NONLEASED_EMPLOYEES
Nonemployers	d_business_employment:NONEMPLOYERS
Paid Day Laborers	d_business_employment:PAID_DAY_LABORERS
Production Workers	d_business_employment:PRODUCTION_WORKERS
Worked Hours	d_business_employment:WORKED_HOURS
<b>Establishments/Firms:</b>	
Concentration of Firms	d_business_establishments_firms:CONCENTRATION_OF_FIRMS
Establishments With Payroll	d_business_establishments_firms:ESTB_WITH_PAYROLL
Establishments Without Payroll	d_business_establishments_firms:ESTB_WITHOUT_PAYROLL
Firms	d_business_establishments_firms:FIRMS
Single Unit/Multi-Unit Firms	d_business_establishments_firms:SINGLE_MULTI_UNIT_FIRMS
<b>Expenses &amp; Purchased Services:</b>	
Accounting Services	d_business_expenses_purchased_services:EPS_ACCOUNTING_SVCS
Advertising Services	d_business_expenses_purchased_services:EPS_ADVERTISING_SVCS
All Expenses	d_business_expenses_purchased_services:EPS_ALL_EXPENSES
Communication Services	d_business_expenses_purchased_services:EPS_COMMUNICATION_SVCS
Construction	d_business_expenses_purchased_services:EPS_CONSTRUCTION
Contract Work	d_business_expenses_purchased_services:EPS_CONTRACT_WORK
Data Processing Services	d_business_expenses_purchased_services:EPS_DATA_PROCESSING_SVCS
Electricity	d_business_expenses_purchased_services:EPS_ELECTRICITY
Fuels	d_business_expenses_purchased_services:EPS_FUELS
Grants and Other Payments	d_business_expenses_purchased_services:EPS_GRANTS_OTHER

Topic Hierarchy	dimension:dimension_value pair
Legal Services	d_business_expenses_purchased_services:EPS_LEGAL_SVCS
Materials, Parts, etc.	d_business_expenses_purchased_services:EPS_MATERIALS_PARTS_ETC
Office Supplies	d_business_expenses_purchased_services:EPS_OFFICE_SUPPLIES
Refuse Removal Services	d_business_expenses_purchased_services:EPS_REFUSE_REMOVAL_SVCS
Repairs	d_business_expenses_purchased_services:EPS_REPAIRS
Resales	d_business_expenses_purchased_services:EPS_RESALES
Taxes and License Fees	d_business_expenses_purchased_services:EPS_TAXES_LICENSE_FEES
Utilities	d_business_expenses_purchased_services:EPS_UTILITIES
Fuels & Materials:	
Fuels	d_business_fuels_and_materials:FM_FUELS
Materials	d_business_fuels_and_materials:FM_MATERIALS
Inventories:	
Finished Goods Inventories	d_business_inventories:FINISHED_GOODS_INVENTORIES
Inventories by Valuation Method	d_business_inventories:INVENTORIES_BY_VM
Inventories Subject to LIFO	d_business_inventories:INVENTORIES_SUBJECT_TO_LIFO
Materials Inventories	d_business_inventories:MATERIALS_INVENTORIES
Mined or Quarried Products	d_business_inventories:MINED_OR_QUARRIED_PRODUCTS
Supplies, Parts, Fuels, etc.	d_business_inventories:SUPPLIES_PARTS_FUELS_ETC
Total Inventories	d_business_inventories:TOTAL_INVENTORIES
Work-in-Process Inventories	d_business_inventories:WIP_INVENTORIES
Labor Costs:	
Commissions Paid	d_business_labor_costs:COMMISSIONS_PAID
Contribution/Pension Plans	d_business_labor_costs:CONTRIBUTION_PENSION_PLANS
Fringe Benefits	d_business_labor_costs:FRINGE_BENEFITS
Health Insurance	d_business_labor_costs:HEALTH_INSURANCE
Payroll (Annual)	d_business_labor_costs:PAYROLL_ANNUAL
Payroll (First Quarter)	d_business_labor_costs:PAYROLL_FIRST_QUARTER
Worker Wages	d_business_labor_costs:WORKER_WAGES
Sales, Receipts, Revenue, or Shipments:	
Commissions Received	d_business_srrs:COMMISSIONS_RECEIVED
e-Commerce Sales	d_business_srrs:E_COMMERCE_SALES
Exported Sales/Services	d_business_srrs:EXPORTED_SALES_SERVICES
Government Sales	d_business_srrs:GOVERNMENT_SALES
Gross Margin	d_business_srrs:GROSS_MARGIN
Receipts	d_business_srrs:RECEIPTS

<b>Topic Hierarchy</b>	<b>dimension:dimension_value pair</b>
Revenue	d_business_srrs:REVENUE
Sales	d_business_srrs:SALES
Shipments	d_business_srrs:SHIPMENTS
Value of Construction Work	d_business_srrs:VALUE_OF_CONSTRUCTION_WORK
Value of Sales, Receipts, Revenue, or Shipments	d_business_srrs:VALUE_OF_SRRS
<b>Year</b>	
Year:	
2000	d_data_orig_year:2000
2002	d_data_orig_year:2002
2004	d_data_orig_year:2004
2005	d_data_orig_year:2005
2006	d_data_orig_year:2006
2007	d_data_orig_year:2007
2008	d_data_orig_year:2008
2009	d_data_orig_year:2009
2010	d_data_orig_year:2010
2011	d_data_orig_year:2011
2012	d_data_orig_year:2012
<b>Product Type</b>	
Product Type:	
Commodity Quick Report	d_product_type:COMMODITY_QUICK_REPORT
Comparison Profile	d_product_type:COMPARISON_PROFILE
Data Profile	d_product_type:DATA_PROFILE
Detailed Table	d_product_type:DETAILED_TABLE
Document	d_product_type:DOCUMENT
Geographic Comparison Table	d_product_type:GEO_COMPARISON_TABLE
Geographic Header	d_product_type:GEO_HEADER
Geographic Quick Report	d_product_type:GEO_QUICK_REPORT
Industry Quick Report	d_product_type:INDUSTRY_QUICK_REPORT
Narrative Profile	d_product_type:NARRATIVE_PROFILE
Product Quick Report	d_product_type:PRODUCT_QUICK_REPORT
Quick Table	d_product_type:QUICK_TABLE
Ranking Table	d_product_type:RANKING_TABLE
Selected Population Profile	d_product_type:SELECTED_POP_PROFILE
Subject Table	d_product_type:SUBJECT_TABLE

<b>Topic Hierarchy</b>	<b>dimension:dimension_value pair</b>
<b>Document Type</b>	
Document Type:	
Archived Statistical Table	d_document_type:ARCHIVED_TABLE
Code List	d_document_type:CODE_LIST
Data Dictionary	d_document_type:DICTIONARY
Definition	d_document_type:DEFINITION
Design and Methodology	d_document_type:DESIGN_AND_METHODODOLOGY
Errata	d_document_type:ERRATA
Geographic Note	d_document_type:GEOGRAPHIC_NOTE
Map	d_document_type:MAP
Miscellaneous	d_document_type:MISCELLANEOUS
Publication	d_document_type:PUBLICATION
Quality Measures	d_document_type:QUALITY_MEASURE
Questionnaire	d_document_type:QUESTIONNAIRE
Report	d_document_type:REPORT
Special Printed Report	d_document_type:SPECIAL_PRINTED_REPORT
Subject Definitions	d_document_type:SUBJECT_DEFINITION
Summary File Extract	d_document_type:SUMMARY_FILE_EXTRACT
Summary File	d_document_type:SUMMARY_FILE
Technical Documentation	d_document_type:TECHNICAL_DOCUMENTATION
Variance Document	d_document_type:VARIANCE_DOCUMENT
<b>Data Type</b>	
Data Type:	
Allocation/Imputation	d_type_of_data:DATA_ALLOCATION
Corrections/Errata	d_type_of_data:DATA_CORRECTION
Sampling Rate	d_type_of_data:DATA_SAMPLING_RATE
Unweighted Counts	d_type_of_data:DATA_UNWEIGHTED
<b>Program</b>	
Program:	
American Community Survey	d_program:ACS
Annual Survey of Manufactures	d_program:ASM
Business Expenses Survey	d_program:BES
Business Patterns	d_program:BP
Commodity Flow Survey	d_program:CFS
Decennial Census	d_program:DEC

<b>Topic Hierarchy</b>	<b>dimension:dimension_value pair</b>
Economic Census	d_program:ECN
Nonemployer Statistics	d_program:NES
Population Estimates Program	d_program:PEP
Survey of Business Owners	d_program:SBO
<b>Survey</b>	
Survey:	
American Community Survey	d_survey:ACS_ACS
Annual Survey of Manufactures	d_survey:ASM_ASM
Business Expenses Survey	d_survey:BES_BES
Census Island Areas	d_survey:DEC_DEC_IA
Census Puerto Rico	d_survey:DEC_DEC_PR
Census United States	d_survey:DEC_DEC_US
Commodity Flow Survey	d_survey:CFS_CFS
County Business Patterns	d_survey:BP_CBP
Economic Census Island Areas	d_survey:ECN_ECN_IA
Economic Census United States	d_survey:ECN_ECN_US
Nonemployer Statistics	d_survey:NES_NES
Population Estimates	d_survey:PEP_PEP
Puerto Rico Community Survey	d_survey:ACS_PRC
Survey of Business Owners	d_survey:SBO_SBO
Zip Code Business Patterns	d_survey:BP_ZBP
<b>Dataset</b>	
Dataset:	
2006-2010 American Community Survey 5-Year Estimates	d_dataset:ACS_10_5YR
2008-2010 American Community Survey 3-Year Estimates	d_dataset:ACS_10_3YR
2010 American Community Survey 1-Year Estimates	d_dataset:ACS_10_1YR
2005-2009 American Community Survey 5-Year Estimates	d_dataset:ACS_09_5YR
2007-2009 American Community Survey 3-Year Estimates	d_dataset:ACS_09_3YR
2009 American Community Survey 1-Year Estimates	d_dataset:ACS_09_1YR
2006-2008 American Community Survey 3-Year Estimates	d_dataset:ACS_08_3YR
2008 American Community Survey 1-Year Estimates	d_dataset:ACS_08_1YR
2005-2007 American Community Survey 3-Year Estimates	d_dataset:ACS_07_3YR
2007 American Community Survey 1-Year Estimates	d_dataset:ACS_07_1YR
2006 American Community Survey	d_dataset:ACS_06_EST
2005 American Community Survey	d_dataset:ACS_05_EST



Topic Hierarchy	dimension:dimension_value pair
2008 Annual Survey of Manufactures	d_dataset:ASM_2008
2006 Annual Survey of Manufactures	d_dataset:ASM_2006
2005 Annual Survey of Manufactures	d_dataset:ASM_2005
2004 Annual Survey of Manufactures	d_dataset:ASM_2004
2002 Business Expenses Survey	d_dataset:BES_2002
2009 Business Patterns	d_dataset:BP_2009
2008 Business Patterns	d_dataset:BP_2008
2007 Business Patterns	d_dataset:BP_2007
2006 Business Patterns	d_dataset:BP_2006
2005 Business Patterns	d_dataset:BP_2005
2004 Business Patterns	d_dataset:BP_2004
2007 Commodity Flow Survey	d_dataset:CFS_2007
2002 Commodity Flow Survey	d_dataset:CFS_2002
2010 Census Summary File 1	d_dataset:DEC_10_SF1
2010 Census Summary File 2	d_dataset:DEC_10_SF2
2010 Census Redistricting Data (Public Law 94-171) Summary File	d_dataset:DEC_10_PL
2010 Census National Summary File of Redistricting Data	d_dataset:DEC_10_NSRD
2010 Demographic Profile Data	d_dataset:DEC_10_DP
2010 Census Same-Sex Couple Households Summary File	d_dataset:DEC_10_SS
110th Congressional District Summary File (100-Percent)	d_dataset:DEC_00_110H
110th Congressional District Summary File (Sample)	d_dataset:DEC_00_110S
Census 2000 American Indian and Alaska Native Summary File (AIANSF) - Sample Data	d_dataset:DEC_00_AIAN
Guam Summary File	d_dataset:DEC_00_IAGU
Census 2000 Summary File 2 (SF 2) 100-Percent Data	d_dataset:DEC_00_SF2
Census 2000 Count Question Resolution (CQR)	d_dataset:DEC_00_CQR
Census 2000 Redistricting Data (Public Law 94-171) Summary File	d_dataset:DEC_00_PL
Commonwealth of the Northern Mariana Islands Summary File	d_dataset:DEC_00_IAMP
Census 2000 Summary File 3 (SF 3) - Sample Data	d_dataset:DEC_00_SF3
Census 2000 State Legislative District Summary File (100-Percent)	d_dataset:DEC_00_SLDH

<b>Topic Hierarchy</b>	<b>dimension:dimension_value pair</b>
American Samoa Summary File	d_dataset:DEC_00_IAAS
Census 2000 Summary File 1 (SF 1) 100-Percent Data	d_dataset:DEC_00_SF1
U.S. Virgin Islands Summary File	d_dataset:DEC_00_IAVI
Census 2000 Summary File 4 (SF 4) - Sample Data	d_dataset:DEC_00_SF4
Census 2000 State Legislative District Summary File (Sample)	d_dataset:DEC_00_SLDS
2007 Economic Census	d_dataset:ECN_2007_US
2007 Economic Census of Island Areas	d_dataset:ECN_2007_IA
2002 Economic Census	d_dataset:ECN_2002_US
2002 Economic Census of Island Areas	d_dataset:ECN_2002_IA
2008 Nonemployer Statistics	d_dataset:NES_2008
2007 Nonemployer Statistics	d_dataset:NES_2007
2006 Nonemployer Statistics	d_dataset:NES_2006
2005 Nonemployer Statistics	d_dataset:NES_2005
2004 Nonemployer Statistics	d_dataset:NES_2004
2002 Nonemployer Statistics	d_dataset:NES_2002
2009 Population Estimates	d_dataset:PEP_2009
2008 Population Estimates	d_dataset:PEP_2008
2007 Population Estimates	d_dataset:PEP_2007
2006 Population Estimates	d_dataset:PEP_2006
2002 Survey of Business Owners	d_dataset:SBO_2002